

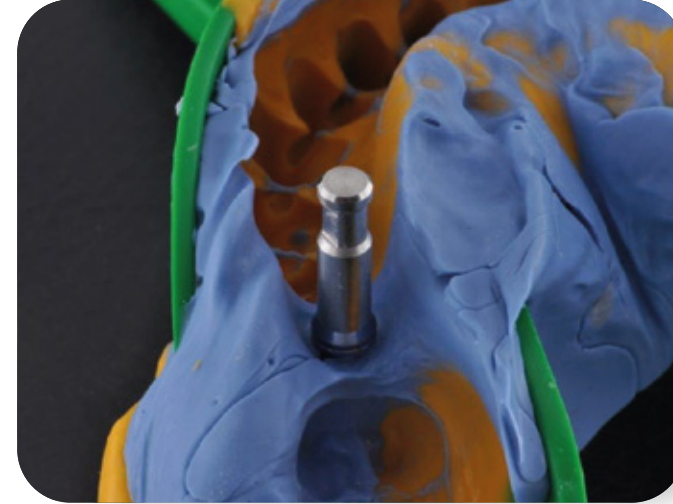
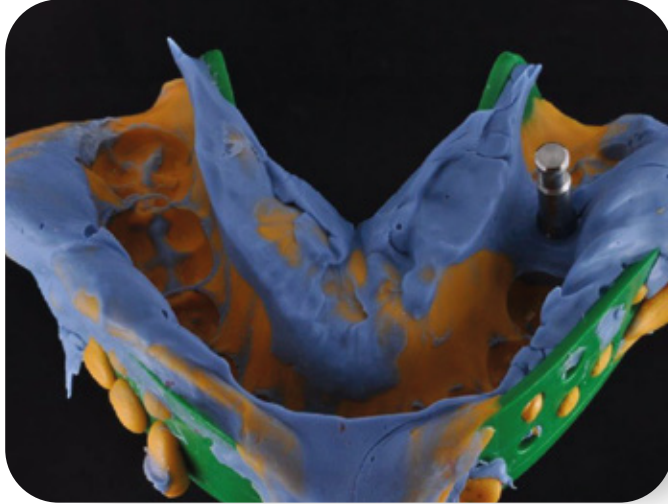
Prótesis Cemento-Atornillada
con ZPLUS® Proceso Laboratorio
Cemented-Screw-Retained
Crown with ZPLUS®
Laboratory process

Colaboración / Collaboration: Alberto Ramírez
Laboratorio / Laboratory: Coraldent. Sevilla

ZIACOM®

▶ Prótesis Cementada

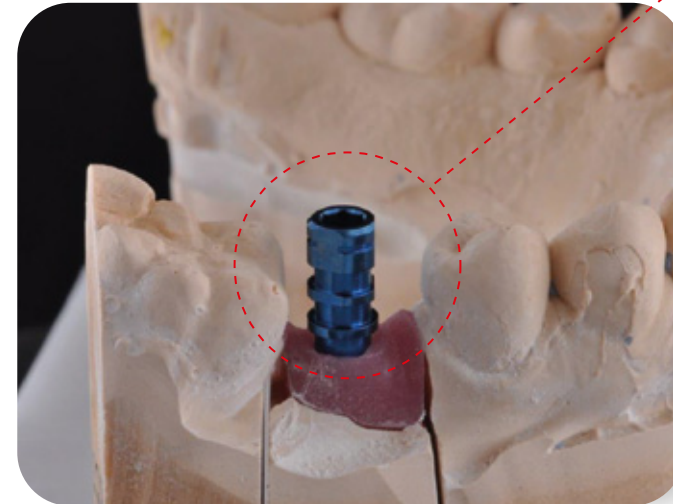
Conexión de análogo al transfer de impresión /
Analogue and impression transfer connection



Modelo de yeso /
Plaster cast



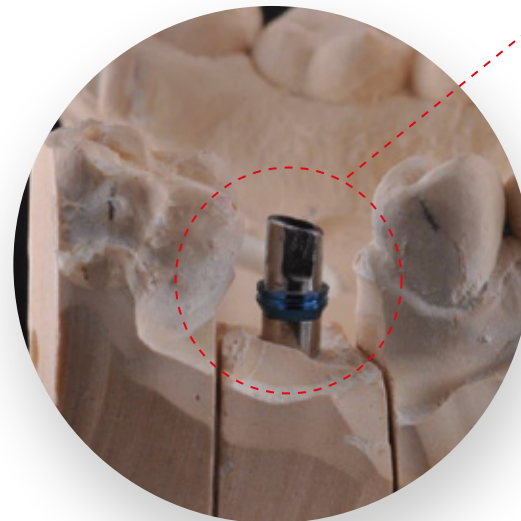
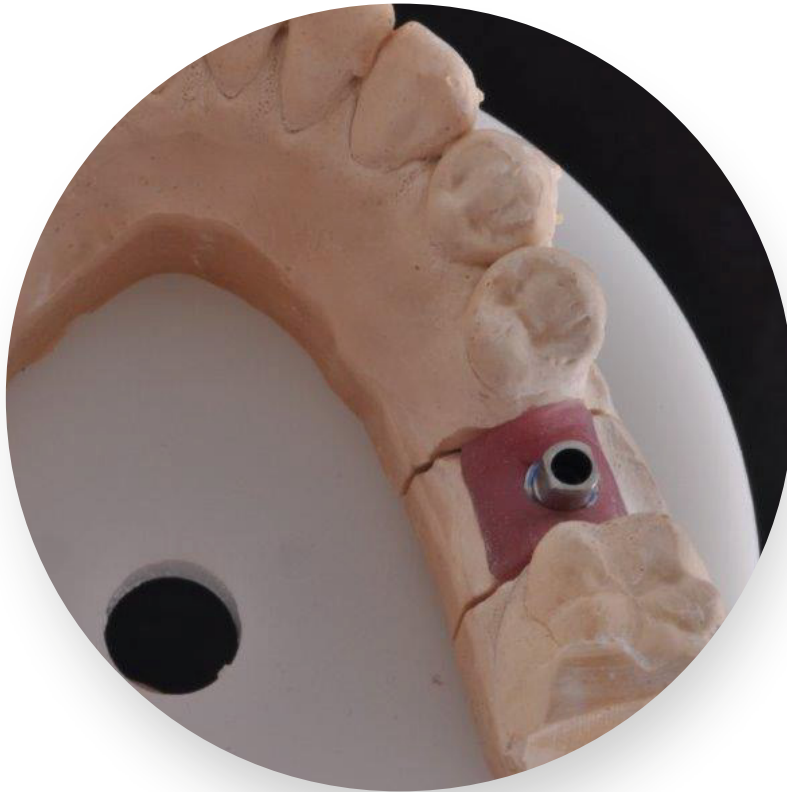
Conexión del pilar sobre el análogo /
Analogue and abutment connection



ZPLUS®
transportador
multifunción /
ZPLUS®
multifunction
mount

▶ Prótesis Cementada

Preparación del ZPLUS® (como pilar) /
ZPLUS® preparation (as abutment)

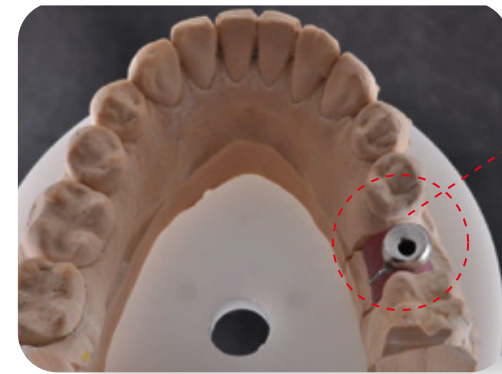
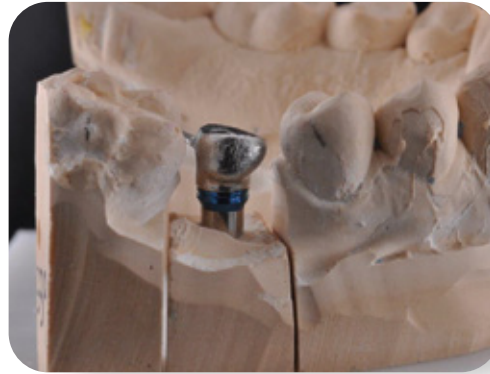
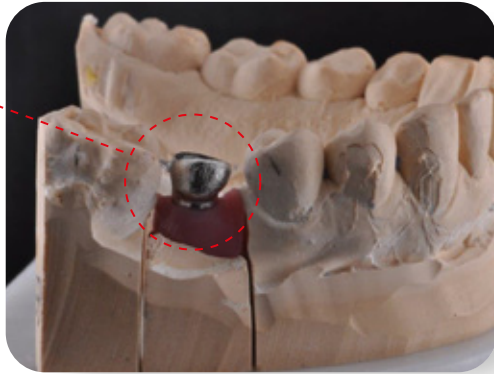


ZPLUS® tallado
como pilar /
ZPLUS® prepared
as an abutment

▶ Prótesis Cementada

Prueba de la cofia metálica / Metal framework try-in

Estructura colada /
Metal
framework



Vista oclusal
del canal
del tornillo /
Occlusal
view of screw
hole

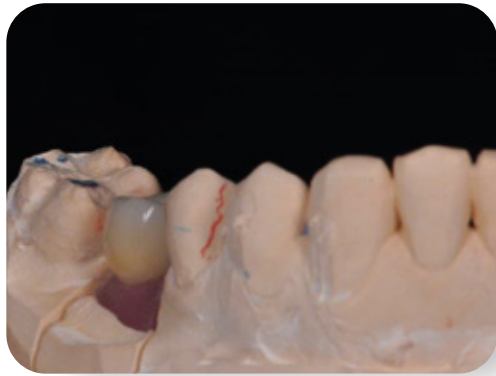
Cementado / Cementing / cementation

Corona definitiva
metal cerámica
cementada al pilar /
Final metal-ceramic
restoration cemented
to abutment

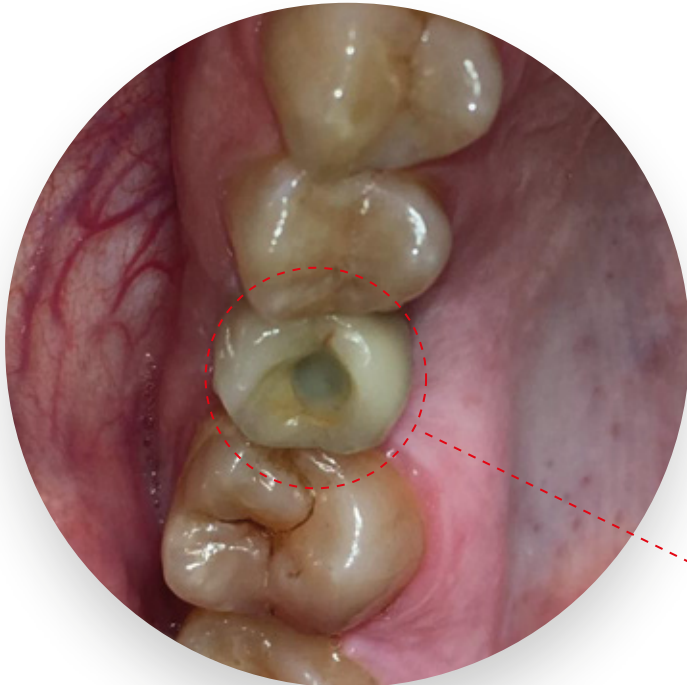


▶ Prótesis Cementada

Corona finalizada /
final restoration

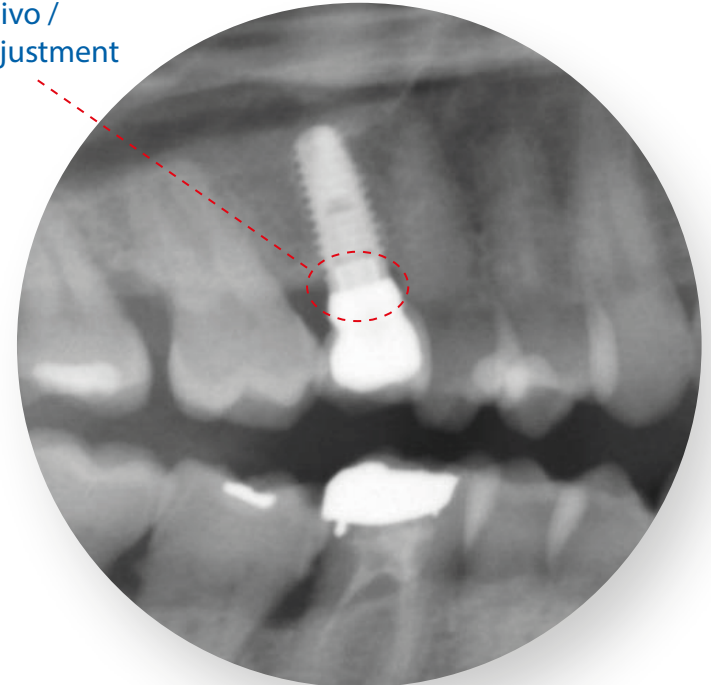


Control clínico y radiográfico /
Clinical and X-Ray control



Obturación de canal del tornillo
con composite / Canal screw
filling with composite

Ajuste pasivo /
Passive adjustment



Prótesis Cemento Atornillada Proceso Laboratorio

Colaboración Alberto Ramírez
Laboratorio Coraldent. Sevilla



Prodecimientos
Prostodoncia