

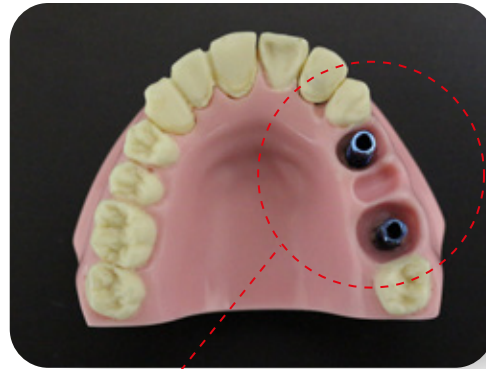
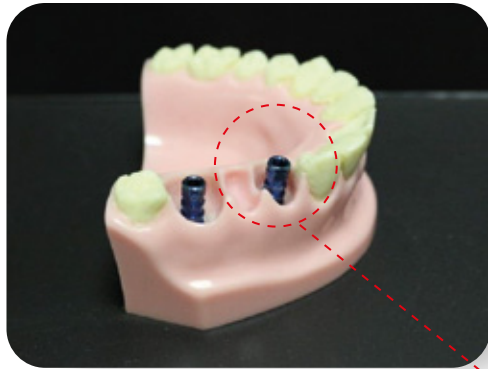
Toma de Impresión
de cubeta abierta con ZPLUS®
/ Open tray impression
technique on internal connection
implants with ZPLUS®

ZIACOM®



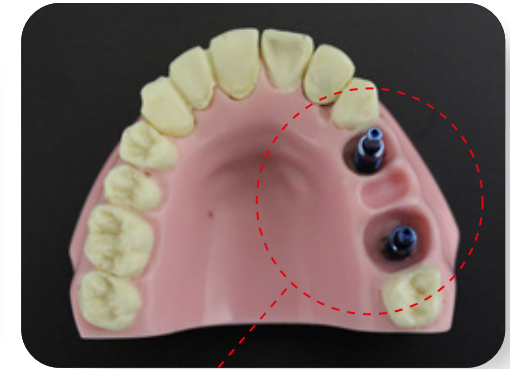
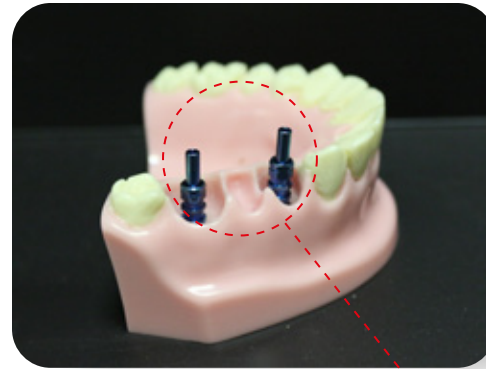
► Toma de Impresión

Colocación de los transfer de impresión / Transfer impression placement



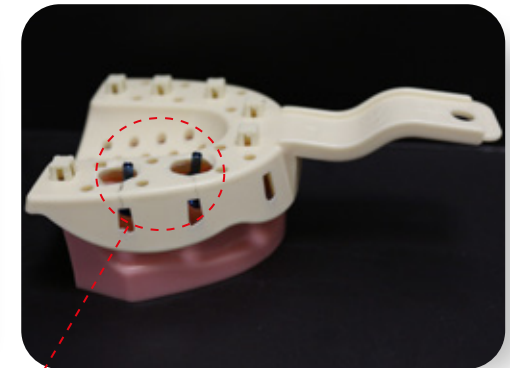
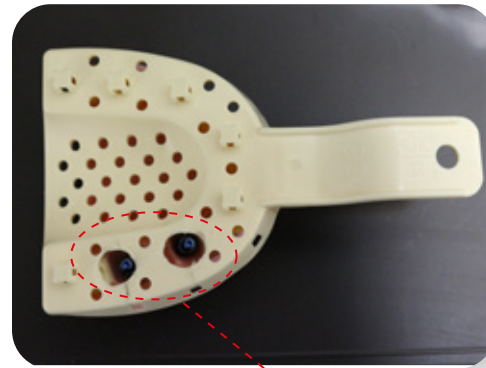
ZPLUS® transportador multifunción como
transfer de impresión / ZPLUS® multifunction
Mount as impression transfer

Colocación de los tornillos de impresión / Screw impression placement



Colocación de tornillo de impresión largo
para técnica cubeta abierta / Long impression
screw placement for open tray technique

Selección, perforación y ajuste de la cubeta / Selection, drilling and adjustment of the tray



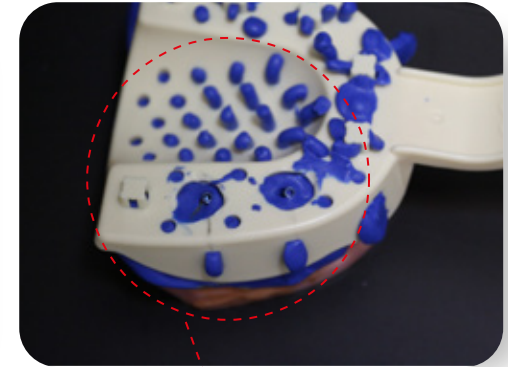
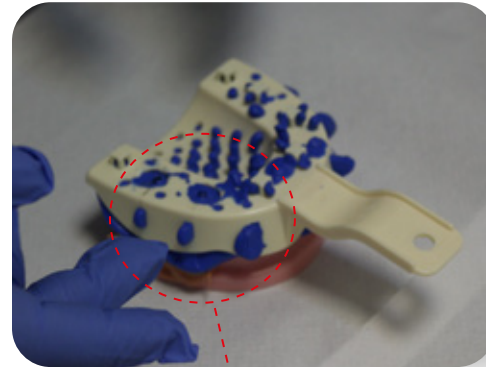
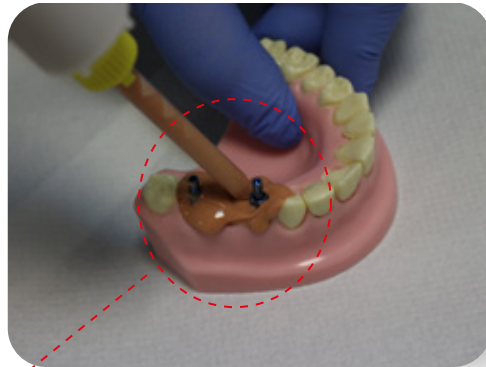
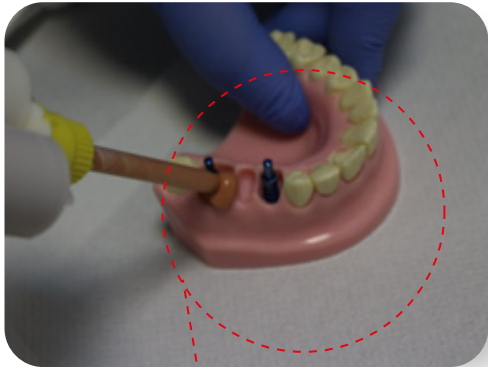
Perforación y ajuste de la cubeta / Tray drilling and adjustment

► Toma de Impresión

Preparación del material de impresión / Impression material setup



Toma de impresion / impression-taking



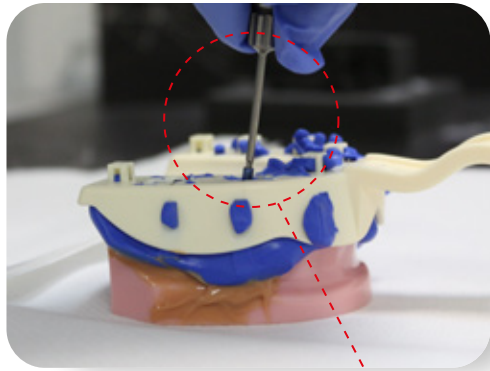
Colocación de material liviano / Light material placement

Asentamiento de la cubeta con material pesado / Tray placement with putty body

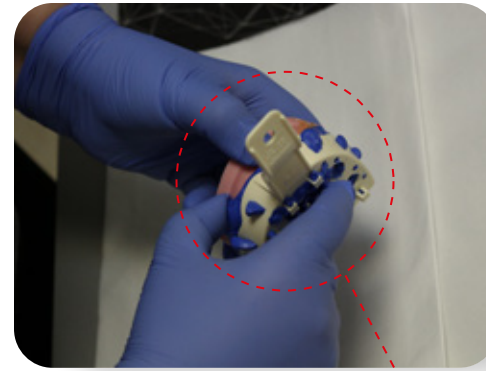
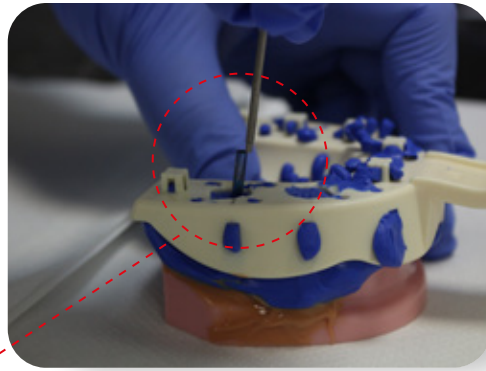
Retiro de excesos para descubrimiento y retiro de tornillos / Excess for screw discovery and removal

► Tomas de Impresión

Retiro de tornillos y cubeta / Screw and tray take out

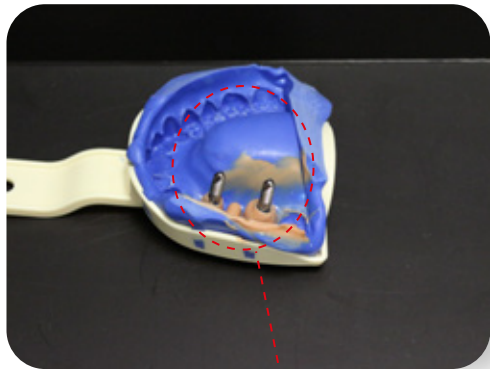


Destornillador manual hexagonal $\varnothing 1,25\text{mm}$ /
Manual screw driver hexagonal $\varnothing 1,25\text{mm}$

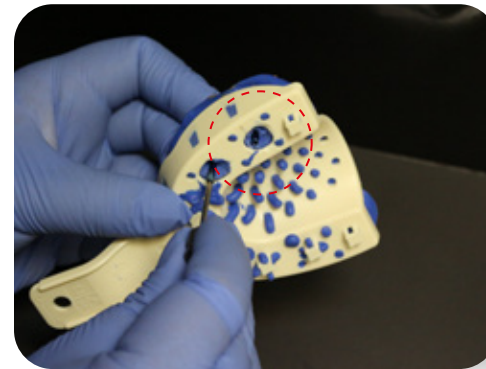
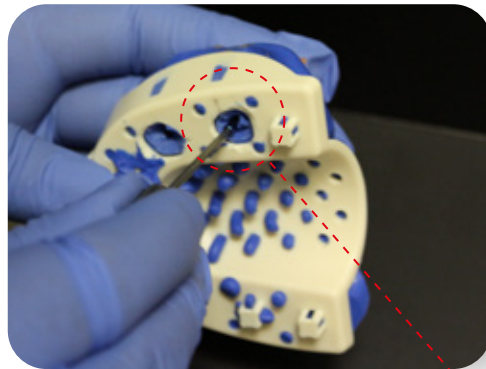


Retiro de la cubeta / Tray removal

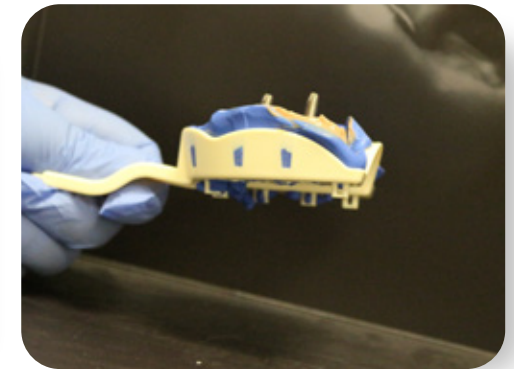
Colocación de los análogos y fijación con tornillo / Analogues placed and fixation with screw



Colocación de análogos
sobre transfer / Analogues
placed over transfer

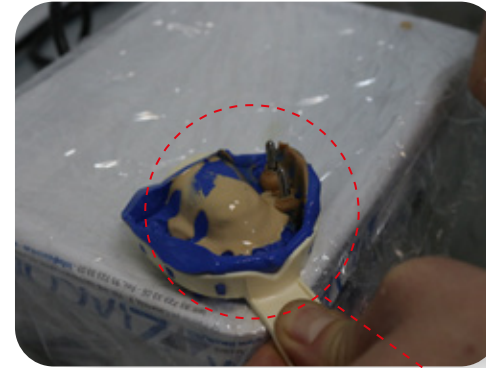


Fijación de los análogos al transfer con tornillos de impresión
para vaciado / Analogue fixed to transfer with impression screw
for casting



► Tomas de Impresión

Vaciado de la impresión con yeso / Impression casting with plaster stone



Controlar relación peso/volumen del yeso y tiempo de mezclado / Control of weight/volume relation and mixing time

Vaciado con vibrador / Impression cast with dental plaster vibrator

Modelo de trabajo de yeso / Plaster cast model



